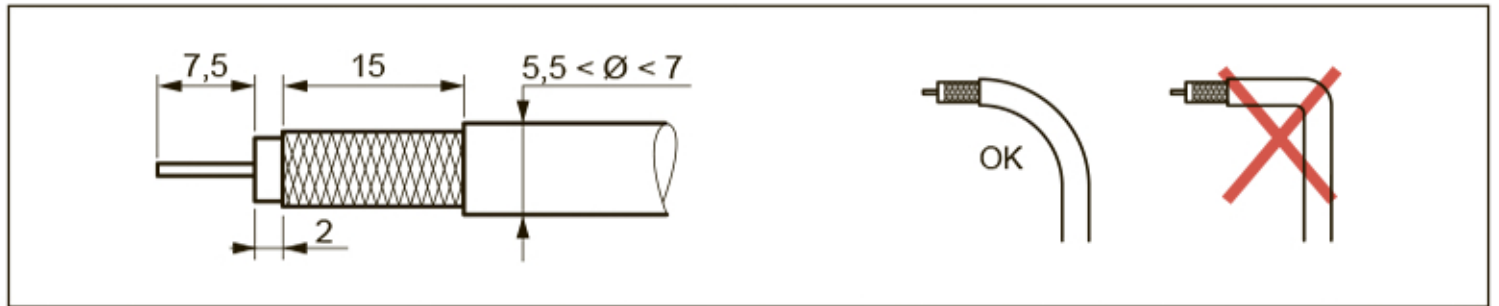
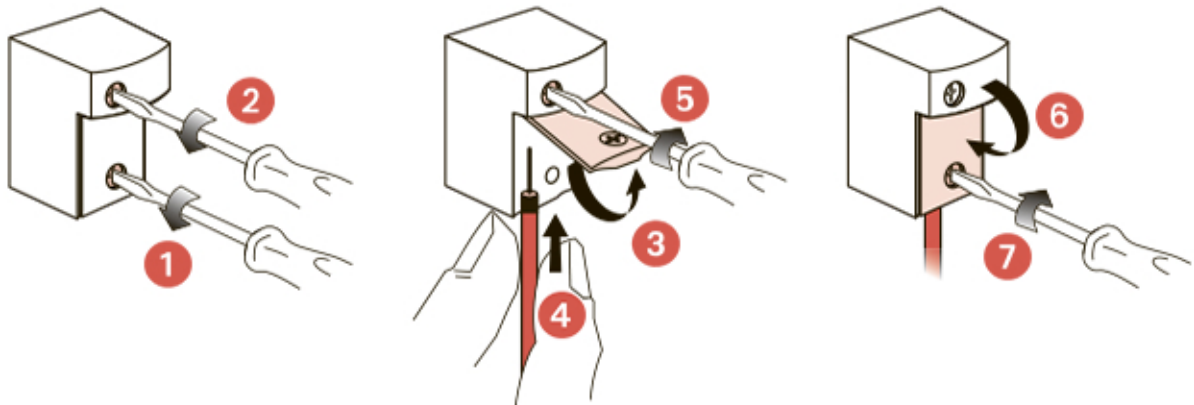


	Coax	Attenuation		Control	Return Path	Channel 1	Channel FM	Channel VHF	Channel UHF	Channel SAT
	Z = 75 Ω		500 mA							
				22 / 0.6	4 - 30	47 - 68	87.5 - 108	120 - 470	470 - 862	950 - 2150
		dB	mA	kHz / V	MHz	MHz	MHz	MHz	MHz	MHz
673 87 6771 38	TV	$\ominus < \text{dB}$ $\dot{i} = 10 \text{ dB}$								
673 86 6771 37		$\ominus < \text{dB}$ $\dot{i} = 14 \text{ dB}$								



673 86 - 6771 37



673 87 - 6771 38

