

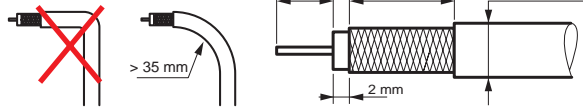
A 7 530 69 / 90

				Control	Return Path	Channel 1	Channel FM	Channel VHF	Channel UHF	Channel SAT (IF)
	75 Ω	< 1,5 dB	500 mA	22 kHz 0,6 V	4 - 30 MHz	47 - 68 MHz	87,5 - 108 MHz	120 - 470 MHz	470 - 862 MHz	950 - 2400 MHz

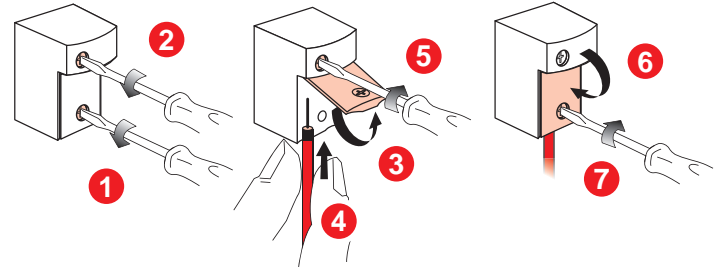
8 mm
5,5 \varnothing <math>< 7\text{ mm}</math>
17 / 19 VATCA
8 mm

1 **2** **3** **4** **CLIC**

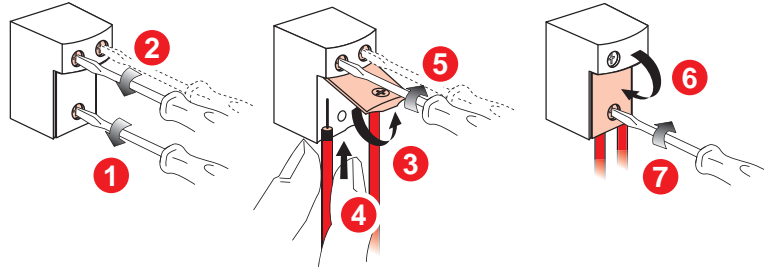
B 7 530 66 / 67



1



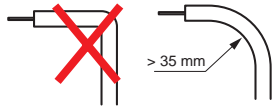
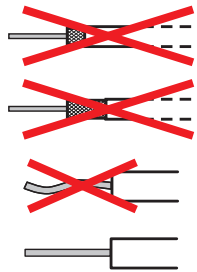
2



				Control
7 530 66	75 Ω	10 dB	500 mA	—
7 530 67		14 dB		

Return Path	Channel 1	Channel FM	Channel VHF	Channel UHF	Channel SAT (IF)
4 - 30 MHz	47 - 68 MHz	87,5 - 108 MHz	120 - 470 MHz	470 - 862 MHz	950 - 2150 MHz

C 7 530 53



TV-R	7 530 53			
------	----------	--	--	--

		Control	Return Path	Channel 1	Channel FM	Channel VHF	Channel UHF	Channel SAT (IF)
75 Ω	500 mA	22 kHz 0,6 V	4 - 30 MHz	47 - 68 MHz	87,5 - 108 MHz	120 - 470 MHz	470 - 862 MHz	950 - 2400 MHz
7 530 53		-	3 dB			-		

