

**A 7 530 50 / 51**

			Control	Return Path	Channel 1	Channel FM	Channel VHF	Channel UHF	Channel SAT (IF)
75 Ω	< 1,5 dB	500 mA	22 kHz 0,6 V	4 - 30 MHz	47 - 68 MHz	87,5 - 108 MHz	120 - 470 MHz	470 - 862 MHz	950 - 2400 MHz

8 mm

5,5 <math>\varnothing</math> <math>< 7\text{ mm}</math>

17 / 19 VATCA

8 mm

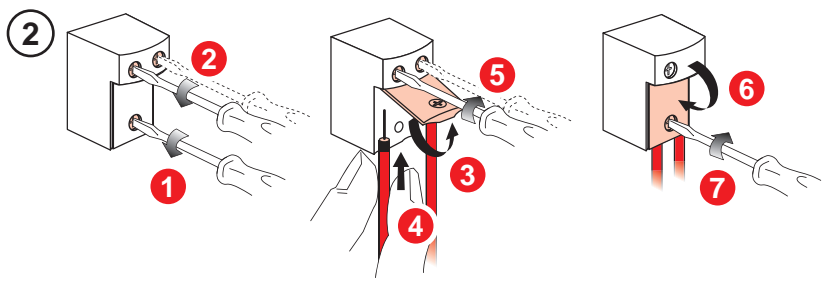
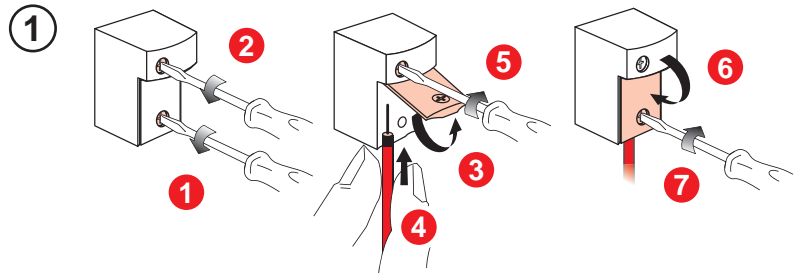
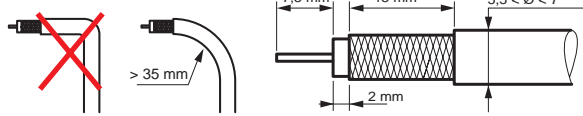
**1**

**2**

**3**

**4** **CLIC**

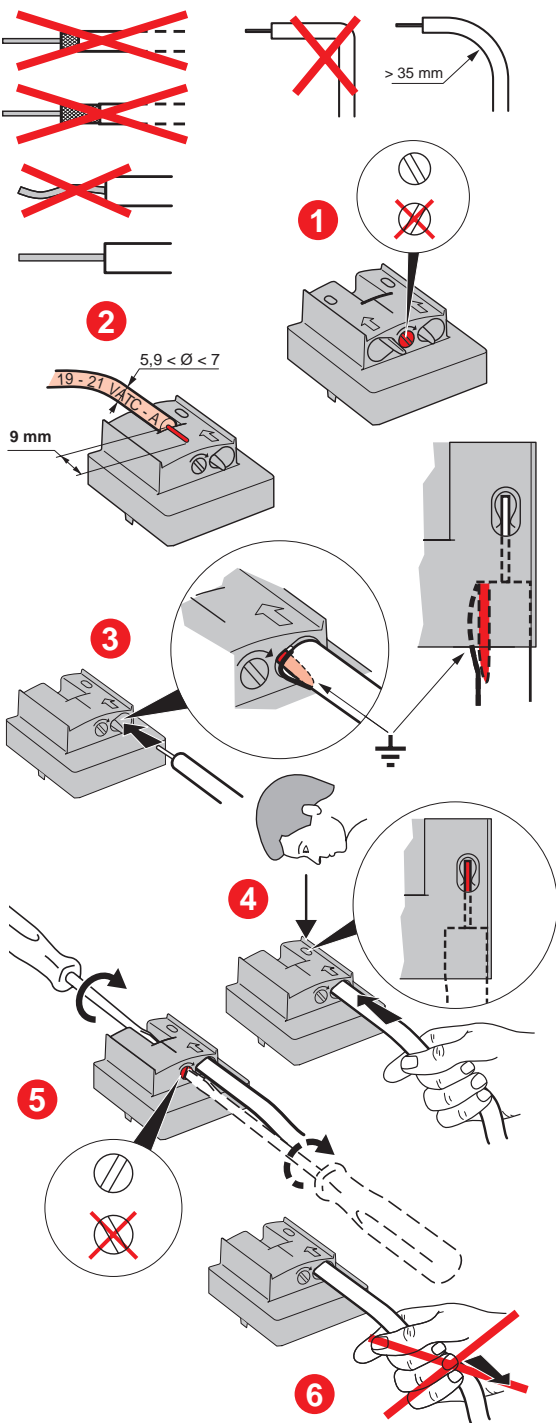
**B** 7 530 60 / 61



				Control
7 530 60	75 $\Omega$	10 dB	500 mA	—
7 530 61		14 dB		

Return Path	Channel 1	Channel FM	Channel VHF	Channel UHF	Channel SAT (IF)
4 - 30 MHz	47 - 68 MHz	87,5 - 108 MHz	120 - 470 MHz	470 - 862 MHz	950 - 2150 MHz

**C** 7 530 52 / 57 / 58 / 59 / 62 / 63 / 64 / 65 / 71



Model	Category	Control	Return Path	Channel 1	Channel FM	Channel VHF	Channel UHF	Channel SAT (IF)
7 530 57	TV-SAT	—	4 - 30 MHz	47 - 68 MHz	87,5 - 108 MHz	120 - 470 MHz	470 - 862 MHz	950 - 2150 MHz
7 530 59								10 dB
7 530 71								1,5 dB / 1,5 dB / 14 dB / 14 dB
7 530 62	TV-R	—	4 - 30 MHz	47 - 68 MHz	87,5 - 108 MHz	120 - 470 MHz	470 - 862 MHz	950 - 2150 MHz
7 530 63								1,5 dB / 1,5 dB / 14 dB / 14 dB
7 530 52	TV-R-SAT	22 kHz / 0,6 V	4 - 30 MHz	47 - 68 MHz	87,5 - 108 MHz	120 - 470 MHz	470 - 862 MHz	950 - 2150 MHz
7 530 58								10 dB
7 530 64								1,5 dB / 1,5 dB / 14 dB / 14 dB
7 530 65								1,5 dB / 1,5 dB / 14 dB / 14 dB
7 530 62								10 dB
7 530 63	14 dB							