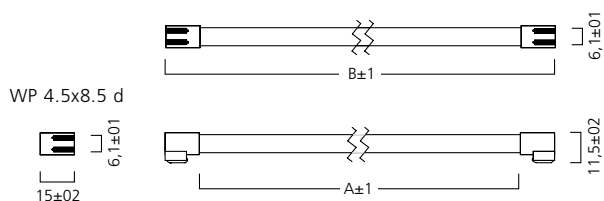


T2 Luxline® Slim



- Wide range of ultra-slim fluorescent lamps allowing a high degree of design flexibility
- Colour rendering Ra80-89 / class 1B
- Operate on electronic control gear
- Average rated life >8000 hrs

	A nom	B nom
6W	176	206
8W	287	308
11W	378	408
13W	479	509
21W	783	813
23W	883	913



T2 LUXLINE® SLIM

Code	Description	Nominal Watt	Nominal Lamp Volt	Current	Cap to Cap Lamp Length	CRI Group	Cap	Luminous Colour Temp	Luminous Flux	Packing Qty.
T2 Luxline Slim Warm White De Luxe (830)										
0002006	T2 6W/830	6W	51V	0.100A	206mm	1B	WP4.5x8.5d	3000K	275 lm	20
0002007	T2 8W/830	8W	79V	0.100A	308mm	1B	WP4.5x8.5d	3000K	450 lm	20
0002008	T2 11W/830	11W	110V	0.100A	408mm	1B	WP4.5x8.5d	3000K	620 lm	20
0002009	T2 13W/830	13W	133V	0.100A	509mm	1B	WP4.5x8.5d	3000K	800 lm	20
0002010	T2 21W/830	21W	210V	0.100A	813mm	1B	WP4.5x8.5d	3000K	1300 lm	20
0002011	T2 23W/830	23W	230V	0.100A	913mm	1B	WP4.5x8.5d	3000K	1400 lm	20
T2 Luxline Slim Cool White De Luxe (840)										
0002012	T2 6W/840	6W	51V	0.100A	206mm	1B	WP4.5x8.5d	4000K	275 lm	20
0002013	T2 8W/840	8W	79V	0.100A	308mm	1B	WP4.5x8.5d	4000K	450 lm	20
0002014	T2 11W/840	11W	110V	0.100A	408mm	1B	WP4.5x8.5d	4000K	620 lm	20
0002015	T2 13W/840	13W	133V	0.100A	509mm	1B	WP4.5x8.5d	4000K	800 lm	20
0002016	T2 21W/840	21W	210V	0.100A	813mm	1B	WP4.5x8.5d	4000K	1300 lm	20
0002017	T2 23W/840	23W	230V	0.100A	913mm	1B	WP4.5x8.5d	4000K	1400 lm	20
T2 Luxline Slim Daylight De Luxe (860)										
0002018	T2 6W/860	6W	51V	0.100A	206mm	1B	WP4.5x8.5d	6000K	275 lm	20
0002019	T2 8W/860	8W	79V	0.100A	308mm	1B	WP4.5x8.5d	6000K	450 lm	20
0002020	T2 11W/860	11W	110V	0.100A	408mm	1B	WP4.5x8.5d	6000K	620 lm	20
0002021	T2 13W/860	13W	133V	0.100A	509mm	1B	WP4.5x8.5d	6000K	800 lm	20
0002022	T2 21W/860	21W	210V	0.100A	813mm	1B	WP4.5x8.5d	6000K	1300 lm	20
0002023	T2 23W/860	23W	230V	0.100A	913mm	1B	WP4.5x8.5d	6000K	1400 lm	20